



FROM VICTORIA TO SOUTH TEXAS

WE'VE GOT A NEW NAME

Page 10

MORTGAGE ASSISTANCE

GETTING HELP FROM THE TEXAS
HOMEOWNER ASSISTANCE FUND

Page 6

GETTING AROUND TOWN

YOUR LOCAL TRANSIT OPTIONS

Page 8

CONNECTION CAFÉ

**THE VICTORIA POLICE
DEPARTMENT PRESENT**

LUNCH & LEARN

Public Safety & Older Adults
Wednesday, June 8th

ALSO THIS MONTH

Food Bank Distribution

June 16: MOWSTx back parking lot. Must be a registered client with the Food Bank. 10:00 AM.

Pet Food Delivery

June 22-24: Pet food will be delivered to program participants at the end of the month. Please return buckets via your driver at least one week prior.



Center Closed June 20th

The Connection Café and our administrative offices will be closed Monday, June 20th for Juneteenth. Voicemails and emails will be answered after the long weekend.

OUR TEAM



DAN WILLIAMS-CAPONE
Executive Director
dan@mowstx.org



DIANA ALARCON
Director of Operations
diana@mowstx.org



BRENDA AMAYA
Executive Chef
kitchen@mowstx.org



JENN PUTMAN
Development & Comms
Manager
jenn@mowstx.org



KIM PEREZ
Program Services
& Volunteer Manager
kim@mowstx.org



TINA DOGGETT
Transportation & Office
Coordinator
office@mowstx.org



JENNY HERRERA
Intake Coordinator
intake@mowstx.org



EMILY RODRIGUEZ
Café Coordinator
cafe@mowstx.org

KITCHEN

Hector Hortado
Prisila Rodriguez
Albert Rangel

DRIVERS

Brandy Candia
Jessica Rodriguez
Mary Torres
Reagan Green



WHAT WE DO

- All of our meals are prepared fresh each morning in our commercial kitchen at our 603 E Murray headquarters. See our menu (page 4) to find out what we're serving.

MEAL DELIVERY

We deliver meals (1 hot, 4 frozen) once a week. See below for your delivery day.

Victoria City Limits: Monday

Victoria County: Tuesday

Cuero & Thomaston:
Wednesday

ONSITE DINING

MORE INFO ON PAGE 5

Monday - Friday, 9:30 - 11:30 AM. Meals served at 11:00 AM. BINGO Tuesday & Thursday, 10:00 AM.

Please wear a mask and follow physical distancing guidelines. **Reservations are required.**



TRANSPORTATION

Transportation clients do not need to be existing meal clients.

Pickup and delivery are only available within Victoria city limits. We advise booking well ahead; spots fill up quickly.

We currently do not provide transportation on Mondays.

To reserve a ride, call 361-576-2189 by 1:00 PM, **the business day prior** to your appointment at the latest. No reservations will be scheduled after 1:00 PM. We are available Monday - Friday to take your call. **Do not leave a request on the answering machine.**

New riders must complete an intake form, available on our website. Fax, mail, or hand-deliver the form back to us.

OTHER SERVICES FOR CURRENT CLIENTS

You must be an enrolled meal client to receive these services.

FRIENDLY CALLERS

Chat on the phone once a week with a MOWSTx volunteer.

BOOKS & MORE

We deliver Victoria Public Library materials every three weeks.

PET ASSISTANCE

Dry dog and cat food is delivered at the end of each month. We are currently expanding services to include veterinary support.

ADD SERVICES

kim@mowstx.org
361-576-2189

PUZZLES OF THE MONTH

1	8		9			4		2
2	9		3	4			7	
		6		2				1
6				8	9		3	
8	5	1	7	3			6	4
3			4					7
4					5	7	8	
	6	8	2	7			4	9
		7		1	4			6

C	B	I	J	R	A	N	H	T	H
R	H	N	H	B	S	D	M	Y	F
A	J	O	S	C	G	H	W	R	O
F	Z	I	I	R	Z	L	P	A	L
T	R	T	R	O	O	N	I	R	B
S	M	A	U	E	G	O	H	B	F
R	E	T	O	S	N	I	S	I	C
D	A	R	N	E	I	T	D	L	A
H	L	O	O	C	B	C	N	J	L
G	S	P	Z	I	U	E	E	B	L
T	Y	S	N	V	F	N	I	P	E
E	C	N	N	R	Q	N	R	E	R
F	N	A	W	E	M	O	F	T	S
A	B	R	H	S	X	C	E	S	N
C	H	T	L	A	E	H	Y	H	L

WORD BANK

Meals
Cafe
Connection
Transportation
Library
Pets
Services
Callers
Nourish
Health
Friendship
Bingo
Crafts

ANSWERS ON PAGE 7

CONTACT THE EDITOR / REQUEST PUZZLES

Jenn Putman // jenn@mowstx.org // 361-576-2189

MONDAY	TUESDAY	WEDNESDAY	THURSDAY	FRIDAY
HOME-DELIVERED MEALS We deliver 1 hot meal and 4 frozen meals once each week. For Tues - Fri frozen meals, see the previous week's menu. <i>Menu based on what our kitchen is cooking on the indicated day. Café calendar and menu may change without notice.</i>		1 Scrambled Eggs Bacon French Toast Sticks Hashbrowns	2 Spaghetti & Meat Sauce Parmesan Cheese Sugar Snap Peas Toasted Garlic Bread	3 Orange Chicken Fried Rice Pot Stickers Stir Fry Veggies
			BINGO New Century Hospice	
6 Turkey and Spinach Wraps Pasta salad Oatmeal Cookie	7 Chicken Spaghetti Roasted Squash Swirl Cake	8 Seafood Gumbo Stewed Okra White Rice Cornbread	9 Chopped Steak w/ Onion Gravy Roasted Red Potatoes Peach Cobbler	10 Beef Tacos Pinto Beans Spanish Rice
	BINGO First Christian Church	Lunch & Learn Victoria Police Department	BINGO Carter Home Health	Silver Sneaker Workout Dept. Public Health
13 Turkey Dirty Rice Asparagus Salad Ambrosia Salad	14 Roasted Chicken Quarter w/ Cornbread Dressing Turnip Greens Peach Crisp	15 Mushroom Pork Chops Wild Rice Corn & Asparagus Crumb Cake	16 Shredded Pork Enchilada Rice Beans Snickerdoodle Cookie	17 Italian Chicken Soup Spring Peas Roll
	BINGO Kindred at Home & New Century Hospice	Crafts @ the Café Victoria Public Library	BINGO White Elephant	Health Presentation Midcoast Family Services
20  <i>Closed in Observance of Juneteenth</i>	21 Chicken Crisпитos Rice w/ Corn Refried beans Mousse	22 Blackened Pork Loin Jerk Rice Mixed Veggies Wheat Roll	23 Baked Potato Over Chili Roasted Corn Cornbread	24 Chicken Parmesan Over Marinara Roasted Broccoli Garlic Bread
	BINGO Harbor Hospice	Health Presentation PAM Health	BINGO Humana	Silver Sneaker Workout Dept. Public Health
27 Chicken Salad w/ Lettuce Crackers Jell-O	28 Green Chili Pork Rice & Beans Cake	29 Beef Brisket Whipped Potatoes Brussels Sprouts Chocolate Cake	30 Lasagna Corn & Asparagus Chocolate Cookie	
	BINGO TAG Management		Birthday BINGO United Healthcare	

CONNECTION CAFÉ

MONDAY - FRIDAY
9:30 - 11:30 AM

5

9:30 AM Doors Open

10:00 AM Featured Activity (see calendar)

11:00 AM Lunch

Please check in by 9:45 AM to hold your spot.

RESERVE YOUR SPOT

Currently, our Café is open on a **reservation-only basis**.

Call us between the hours of 8:00 AM and 2:00 PM, Monday through Friday, to reserve; voicemail reservations are not accepted. We require that reservations be made **before 1:00 PM the prior business day**; Monday reservations can be made the prior Friday. Our phone number is 361-576-2189. Transportation to the Café is limited.

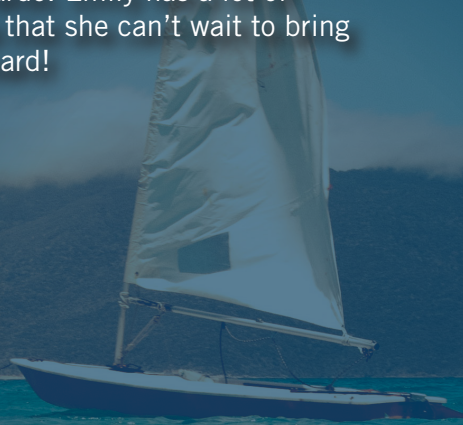
HELP US STAY OPEN

Traffic is limited to the dining hall side of the building. Please consider wearing a mask while not eating and stay home if you are not feeling well.

MEET EMILY

**Your new Connection
Café Coordinator!**

Emily joined the team in May 2022. In her free time she loves hanging out with friends and her cat Leonardo. Emily has a lot of ideas that she can't wait to bring on board!



6 HOMEOWNER ASSISTANCE

“ The Texas Homeowner Assistance Fund Program (TXHAF) provides financial assistance to qualified Texas homeowners who have fallen behind on their mortgage and related expenses due to the COVID-19 pandemic. ”

The TXHAF Program is a service of the Texas Department of Housing and Community Affairs. Funded by the American Rescue Plan Act of 2021, the program provides grants to eligible homeowners to assist in paying past-due mortgage payments, property taxes, insurance, and HOA fees.

CHECKLIST ELIGIBILITY

Texas homeowners may be eligible for assistance under TXHAF if they meet the following criteria (additional requirements may apply):

Have you fallen behind on one of the following payments?

- Mortgage Loans
- Property Taxes
- Property Insurance
- HOA/Condo Association Fees

☐ Yes

Is your household income either:

- at or below 100% Area Median Income (\$74,400 in Victoria)
- at or below 100% of the median income for the United States (\$67,521)

☐ Yes

Do you occupy a home in Texas as a primary residence?

☐ Yes

Did you experience a qualifying hardship after January 21, 2020, such as lost income or increased expenses due to the pandemic?

☐ Yes

APPLICATION PROCESS REQUIRED DOCUMENTS

- ☐ Identification card, such as a driver's license
- ☐ Past-due mortgage statement, property tax statement, insurance statement, and/or HOA statement
- ☐ Proof of occupancy, such as a utility bill
- ☐ Income documentation, such as pay stubs

HOW TO APPLY

Submit an application through the online portal at www.texashomeownerassistance.com. For additional assistance, call 1-833-651-3874. You can check the status of your at the program website.

If approved, the payment will be sent directly to your mortgage servicer or property charge payee (tax authority, insurance, or HOA).



For Information, Call Toll-Free:

1-833-651-3874

Help is available in multiple languages.

Monday-Friday, 8:00 AM - 6:00 PM CST

7

CONNEC
\$5

ONLINE

- ## CASH OR CHECK

Diners at our Connection Café can drop contributions in the black lockbox on the right side of the main archway.

HOME-D
\$3

PUZZLE ANSWERS

1	8	3	9	6	7	4	5	2	C	B	I	J	R	A	N	H	T
2	9	5	3	4	1	6	7	8	A	J	O	S	C	G	W	R	O
7	4	6	5	2	8	3	9	1	F	Z	I	R	Z	L	P	A	L
6	7	4	1	8	9	2	3	5	S	M	A	U	E	G	O	H	B
8	5	1	7	3	2	9	6	4	D	R	A	N	E	I	D	L	C
3	2	9	4	5	6	8	1	7	H	L	O	O	C	B	C	N	J
4	1	2	6	9	5	7	8	3	T	G	S	P	Z	I	U	E	P
5	6	8	2	7	3	1	4	9	F	A	B	A	W	E	X	O	F
9	3	7	8	1	4	5	2	6	C	H	T	A	S	E	H	Y	H



GETTING AROUND TOWN



MOWSTx TRANSPORTATION

Transportation clients do not need to be existing meal clients.

Pickup and delivery are only available within Victoria city limits. We advise booking well ahead; spots fill up quickly. We currently do not provide transportation on Mondays. New riders must complete an intake form, available on our website. Fax, mail, or hand-deliver the form back to us.

To reserve a ride, call 361-576-2189 by 1:00 PM, **the business day prior** to your appointment at the latest. No reservations will be scheduled after 1:00 PM. We are available Monday - Friday to take your call. **Do not leave a request on the answering machine.**

VICTORIA TRANSIT & RTRANSIT

Public transportation has been steadily improving, and many local buses even have wheelchair lifts to ensure all riders can get aboard. Transit within Victoria city limits is a relatively inexpensive and accessible way to participate in the community. Pass rates for fixed routes start at just 75 cents for one pass and \$35 for a monthly unlimited pass. See the following page for a route map.

The Golden Crescent Regional Planning Commission also offers rural transport via the RTRANSIT program, general Monday - Friday, 7:00 AM - 5:00 PM. RTRANSIT Service is an on-demand curb to curb service, available in the counties of Calhoun, DeWitt, Goliad, Gonzales, Jackson, Lavaca, Matagorda, and Victoria. Call 361-578-8775 to schedule a ride.

VICTORIA TRANSIT

Effective February 4, 2019

The red, blue, and green lines run roughly every 30 minutes; the gold line runs hourly.

Victoria Transit offers free fixed route bus training for passengers with disabilities and senior citizens. Please contact them at 361-578-8775 for more details.

VICTORIA TRANSIT LEGEND

- ☆ Victoria Transit Headquarters
- ✚ Hospital
- ★ Bus Stop
- ⊙ Transfer Station
- Red Route
- Blue Route
- Green Route
- Gold Route
- Route Direction
- Route Direction
- Route Direction
- Route Direction

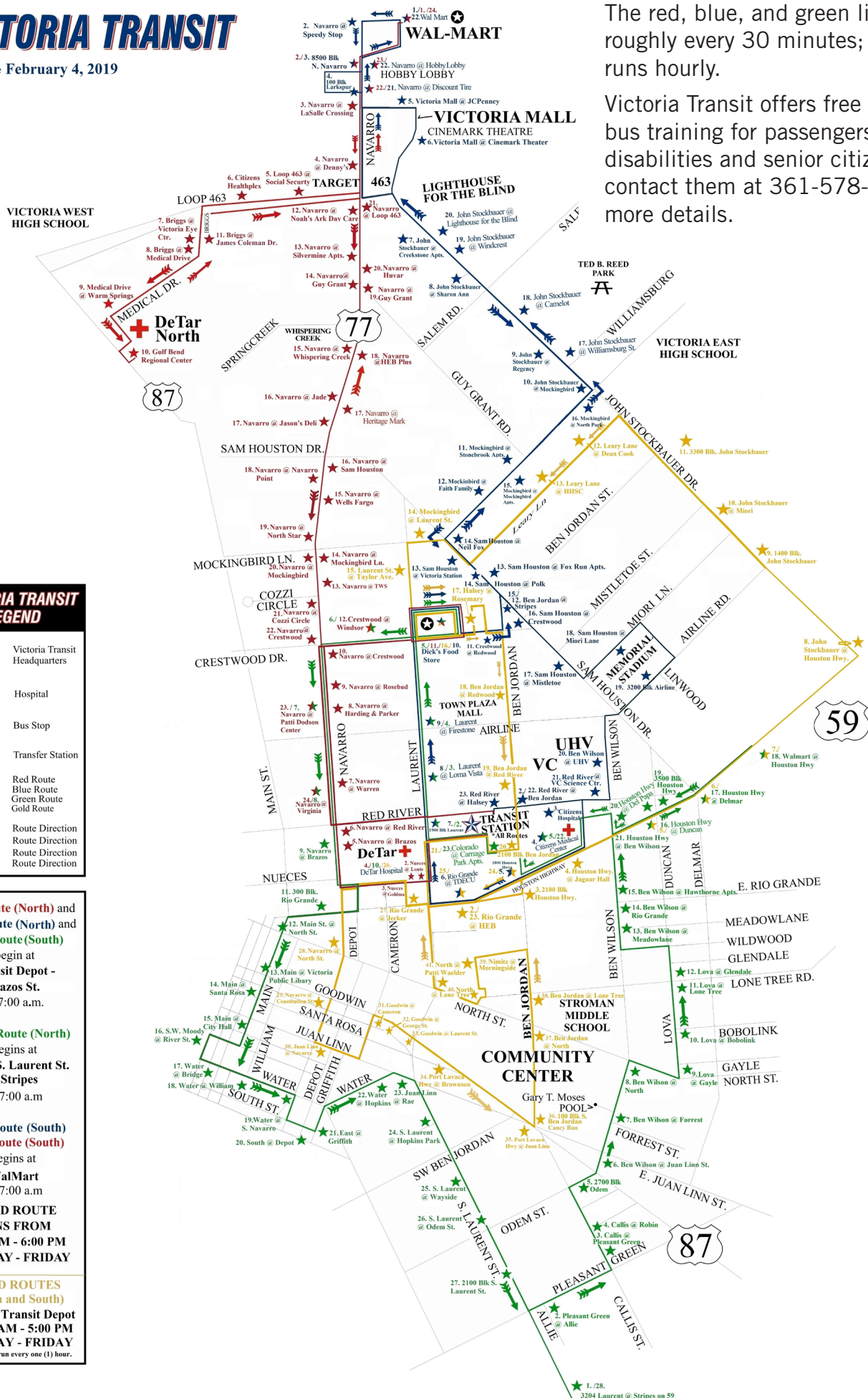
Red Route (North) and Blue Route (North) and Green Route (South) begin at **Transit Depot - Brazos St.** at 7:00 a.m.

Green Route (North) begins at **3204 S. Laurent St. @ Stripes** at 7:00 a.m.

Blue Route (South) **Red Route (South)** begins at **WalMart** at 7:00 a.m.

FIXED ROUTE RUNS FROM 7:00 AM - 6:00 PM MONDAY - FRIDAY

GOLD ROUTES (North and South) Begin at Transit Depot at 8:00 AM - 5:00 PM MONDAY - FRIDAY Gold routes run every one (1) hour.

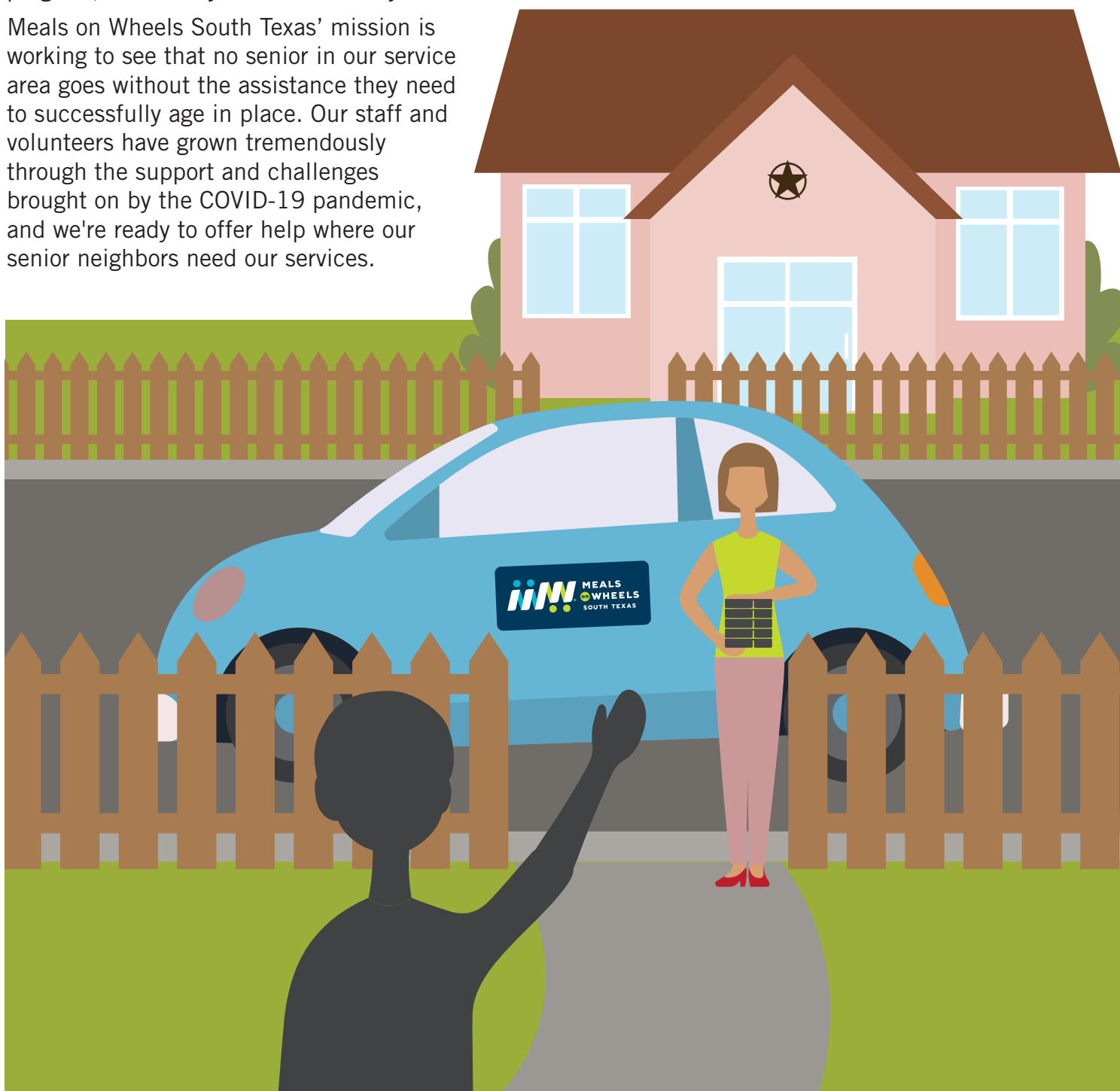


10 OUR NEW NAME

In the last several years, we've grown beyond serving exclusively within Victoria city limits. In 2020, in response to increased demand from COVID-19, we began to deliver meals throughout Victoria County. In 2021, with the help of United Way of the Crossroads, we expanded service to central DeWitt County. 2022 will see further expansion into more of our surrounding rural counties through generous funding and healthcare contracts.

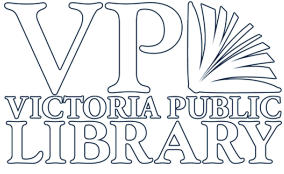
At the same time, we're offering more than ever before, operating under the More than a Meal philosophy. In addition to meal delivery and meal service in the Connection Café, a growing set of supplemental services have been added, including pet assistance, supplemental grocery box delivery, a friendly caller program, and library material delivery.

Meals on Wheels South Texas' mission is working to see that no senior in our service area goes without the assistance they need to successfully age in place. Our staff and volunteers have grown tremendously through the support and challenges brought on by the COVID-19 pandemic, and we're ready to offer help where our senior neighbors need our services.



FREE EVENTS AROUND TOWN

11



Senior Social Hour

Friday, June 10th
10:00 -11:00 AM

Craft Night

Pyrography/Woodburning
Monday, June 13th
6:00-7:30 PM

True Crime Book Club

Monday, June 27th
6:00 – 7:30 PM

Bachfest Breakfast

Wednesday - Friday, June 8-10th
9:00 AM
Nazareth Convent
105 W. Church St.

Clarinet Quintets (Weds, 6/8)

Duo-B (Thurs, 6/9)

Emerging Artists (Fri, 6/10)

12:00 PM
First United Methodist Church
407 N. Bridge St.
Admission is pay-what-you-can

Ruthie Foster

Friday, June 10th
7:30 PM
DeLeon Plaza, Main & Forrest

Big Bang

Saturday, June 11th
1:00 PM
Victoria Public Library

Events around town are neither sponsored by nor affiliated with Meals on Wheels South Texas. We cannot guarantee transportation or currency of information.



VOLUNTEER DONATE PARTNER

Volunteering with MOWSTx is life-changing not only for volunteers themselves but for the seniors who rely on regular meal deliveries. We need volunteers in the following areas:

MEAL DELIVERY

Deliver meals to seniors Monday, Tuesday, and/or Wednesday.

PET PROGRAM

Deliver pet food during the final week of the month.

LIBRARY DELIVERIES

Deliver library materials to clients every three weeks, usually on Wednesdays.

MEAL PREP

Help prep and pack meals Monday through Friday, from 9:00 to 11:00 AM.

CLERICAL SUPPORT

Help our administrative team with the day-to-day office tasks.

FRIENDLY CALLERS

Call clients each week to chat and check in on their wellbeing.

Only a fraction of our funding comes from government support; the majority is donated by members of our own community.

Your support will enable us to continue to meet the need of current clients and to grow. It will sustain life-saving and life-improving programs for older adults in Victoria and DeWitt counties.

GIVE FOR TOMORROW

See your contributions in action year by year—and enjoy the potential tax benefits—with a Planned Gift.

Arrange a Legacy Gift to create an impact that extends beyond your lifetime:

- With a simple sentence in your will or living trust
- With beneficiary designation
- Or by appointing Meals on Wheels Victoria as charitable beneficiary on an IRA or other retirement plan, life insurance policy, or commercial annuity.

Our Community Partner program recognizes the outstanding helpers operating in our community. Partners contribute in a multitude of ways: by volunteering as a corporate team, sponsoring and calling our BINGO days at the Connection Café, funding specific programs, offering personnel and resources to enrich our programming and activities, and more.

Community Partners can proudly call themselves champions of older adult independence in the community they serve.

Join us in supporting seniors by getting in touch at development@mowstx.org



COMMUNITY PARTNERS



VOLUNTEER
volunteer@mowstx.org

GIVE ONLINE
give.mowstx.org

DISCUSS A GIFT
giving@mowstx.org

PARTNER WITH US
development@mowstx.org



SUPPORT THEIR INDEPENDENCE